



Why EMP for Plex Users

The EMP Tech Group is a recent partner with Plex. Our path to this partnership is a little out of the ordinary and is at the heart of why you should consider choosing us as your hardware partner. We are a value-added reseller of data collection hardware, dedicated to helping our customers automate their operations to be as efficient as possible. We also have a technical services team committed to integrating your data collection and label printing hardware into your operations.

During our daily activities of helping our customers, we found ourselves working with many Plex users. These customers were so happy with our service and support that they started referring us to other Plex users. Before we knew it, we had several Plex users become customers thanks to these “happy customer” referrals.

Because of this success, we approached Plex about their partnership program that would allow us to refer new customers to Plex and give us the opportunity to exhibit at the Plex User Conference. We have also partnered with Zebra as our preferred hardware provider. Our expertise with the Zebra product line means we can help you select the best hardware and device management tools to complement Plex.

Below are some hardware and services that we have been providing our existing customers that are Plex users. We would love the opportunity to discuss your specific needs and make recommendations that fit your production and warehouse requirements.

1 MOBILE COMPUTERS

MC9300 – The Ultimate Mobile Computer

The world’s best-selling industrial computer, the Zebra MC9300, is the default choice for ultimate productivity, performance, and ruggedness. Powered by Android and supported by Zebra’s device management tools, you have everything you need to keep your devices up to date and secure.



TC8300 – Revolutionary Design, Revolutionary Productivity

Designed with your workers in mind, the TC8300 helps maximize productivity while minimizing strain and fatigue. The large touchscreen and popular Android operating system make it easy to use with minimal training required. And the super-rugged design helps it survive in challenging workplace environments.





MC33XX – Versatile, Lightweight Key-Based Touch Computer

The highly successful MC33xx Series is the lightweight, versatile, key-based Android handheld computer that fits right at home in the warehouse, back of the store or the manufacturing floor. The MC33xx Series sets itself apart from the competition by offering four distinct form factors.



TC21 – Cost-Effective Mobile Computing Solution

The new Zebra TC21 is a low-cost mobile computer that offers business-class durability and management features. Featuring an IP67 rating and 5” Gorilla Glass screen, the TC21 can handle it all. Choose from the range of accessories to tailor the device to your workers needs, like an extended battery, hands-free wrist-mount, or a Bluetooth ring scanner.



ET5X – Rugged Enterprise Tablets, Built for Work

The durability and data capture capabilities of these rugged tablets from Zebra make them an excellent tool for businesses looking for a tablet experience on the shop floor. The ET5X series of tablets from Zebra can run either Windows or Android and boast a comprehensive accessory family that allows you to build out the perfect tablet solution.



2 BARCODE SCANNERS

DS36XX – Unstoppable Performance

The DS3600 series is the latest version of Zebra’s ultra-rugged line of barcode scanners. These scanners are engineered to withstand the harshest environments and deliver unmatched barcode reading capabilities.



DS2208 – Affordable and Easy to Use

With 2D barcodes showing up in more places, your old 1D scanners won’t cut it. The DS2208 gives you an affordable way to replace those dated scanners with the latest in performance and features. Choose between corded and cordless models to suit your process.





3 LABEL PRINTERS

ZQ630 – Powerful Features in a Portable Form

Zebra's user-friendly ZQ mobile printers help you print labels and receipts wherever, and whenever you need. Optimized for high duty-cycle label and receipt printing and designed to enhance business processes through easy integration and operation, the ZQ630 delivers higher workplace performance.



ZD421 – Fast, Flexible, Affordable

Building on the legacy of the industry-leading GK Series printers, the ZD421 Series delivers features and functionality that take deployment and management simplicity, ease-of-use and application flexibility and total cost of ownership to a new level.



ZT411 – Performance and Advanced Features

Keep your critical operations running efficiently. Constructed with a durable all-metal frame and bi-fold door, the ZT411 is engineered to last. ZT400 Series printers have a new full color touch display, improved print speed, and advanced printer management features.



4 WLAN

Extreme Networks – WLAN and Wi-Fi Built for Enterprise

Your wireless network is the backbone that supports your connected mobile devices. Providing fast, secure, reliable wireless access to all these devices is no easy feat, which is why you need an enterprise-grade wireless network. Extreme Networks line of WLAN products will keep your workers connected, secure, and productive in all corners of your business.





5 ANDROID

With Zebra, Android is Truly Enterprise Ready

Zebra has the largest range of enterprise optimized Android devices, purpose built to improve the productivity and mobility of your business. Exclusive built-in Mx Technology means Android security is uniquely hardened for use in even the most demanding enterprise environments. And Mobility DNA provides the industry’s most comprehensive suite of workforce mobility must-haves to enable full customization to meet the needs of your business.



6 DEVICE MANAGEMENT AND SERVICES

SOTI – Device Management Made Easy

Zebra is partnered with SOTI to bring customers MobiControl, one of the world's most trusted Enterprise Mobility Management and Bring Your Own Device Management solution. MobiControl enables organizations to manage, support, secure and track corporate-liable and employee-liable mobile devices from end to end.



Zebra OneCare – Support, Service, and Peace of Mind

Every day, you depend on your Zebra mobile computers, barcode scanners and printers to keep your business up and running efficiently. Ensure you get the predictable and dependable performance you need to maximize device uptime and return on investment for your Zebra devices with Zebra OneCare Support Services.



EMP Maintenance Contract – Defeat Downtime

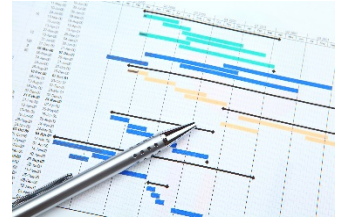
You rely on your label printers to work when you need them. Having reliable printers means you’re able to hit production targets, fill orders, and do business without costly delays. With an onsite printer maintenance contract from EMP Tech Group, you can be confident your printers will always be operating at their best.





EMP Project Management – Hardware and Software Installation and Integration

EMP Tech Group has the experience, knowledge and staff to help you complete your next automation project on time and on budget. Our goal is to help you reduce the burden on your IT resources during your next hardware or software rollout. That means being there for you every step of the way to help you plan, implement, and train. Talk to us about your upcoming project today!



EMP WLAN Services – Site Surveys, Planning, and Installation

Your productivity depends on your wireless network. Make sure you have the coverage, reliability, security, and speed necessary to remain connected across your business. EMP Tech Group can address all your WLAN needs including site surveys, upgrades, installation and troubleshooting.

