



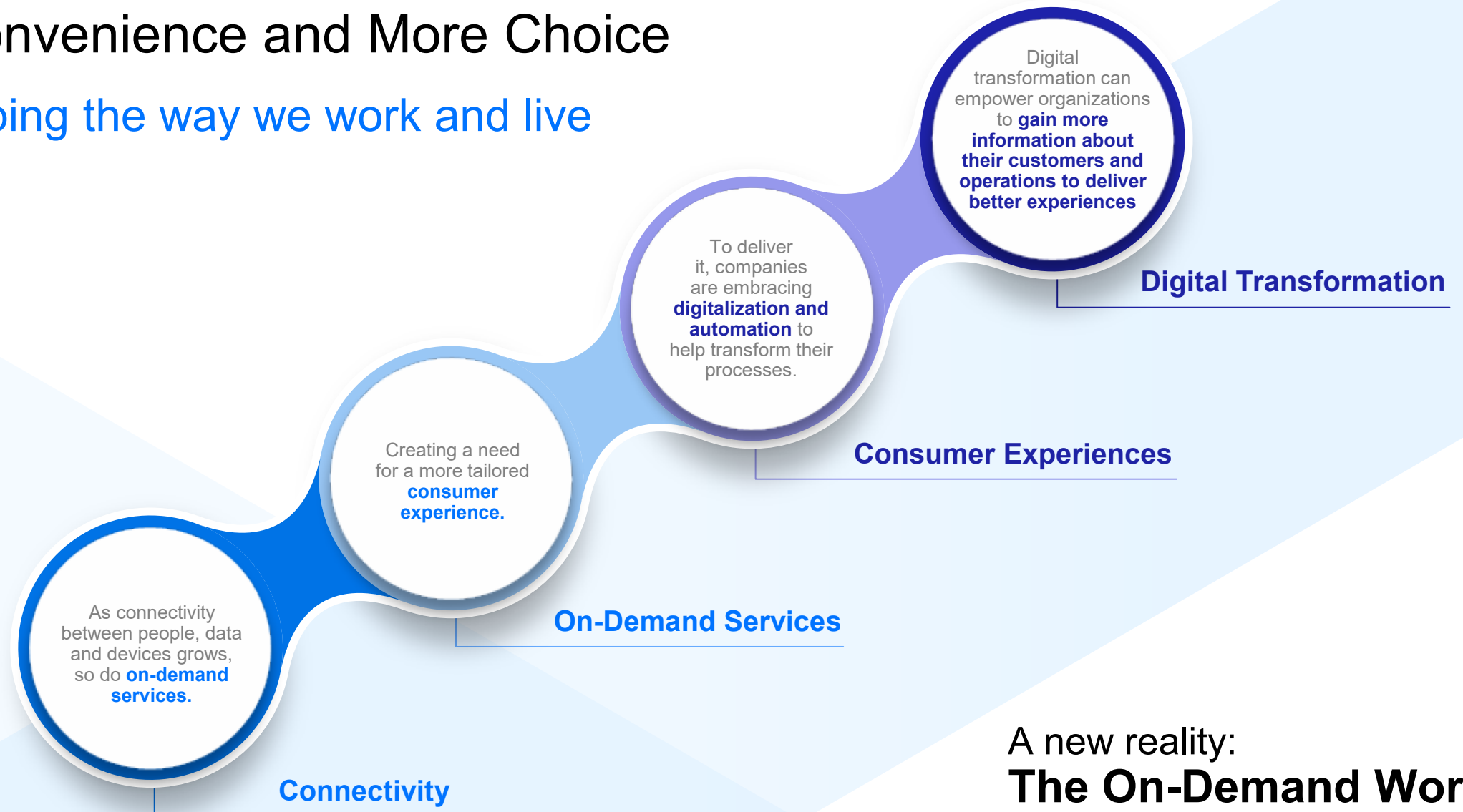
Powering Your On-Demand Enterprise Digital Transformation. Mobility Innovation.

Zebra Enterprise Mobile Computers



Your Customers Demand Faster Speed, More Convenience and More Choice

It's reshaping the way we work and live



A new reality:
The On-Demand World

What does this mean for your business?

What's driving this change?

Three Main Drivers for a Fundamental Shift



Transition to the On-Demand Enterprise Business Model

On-Demand Enterprise Business Model



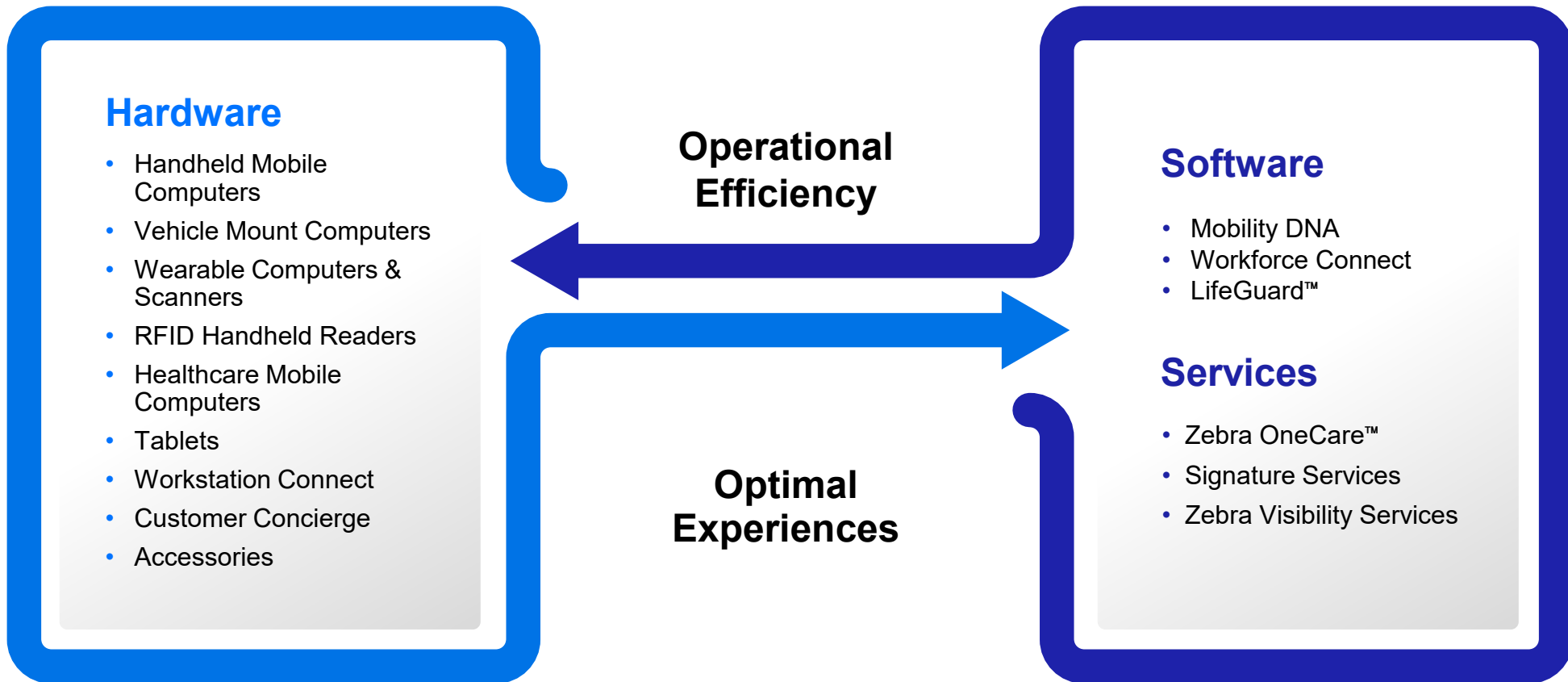
Simplify your Operations

Augment & Connect
your Workforce

Optimize & Accelerate
your Workflows

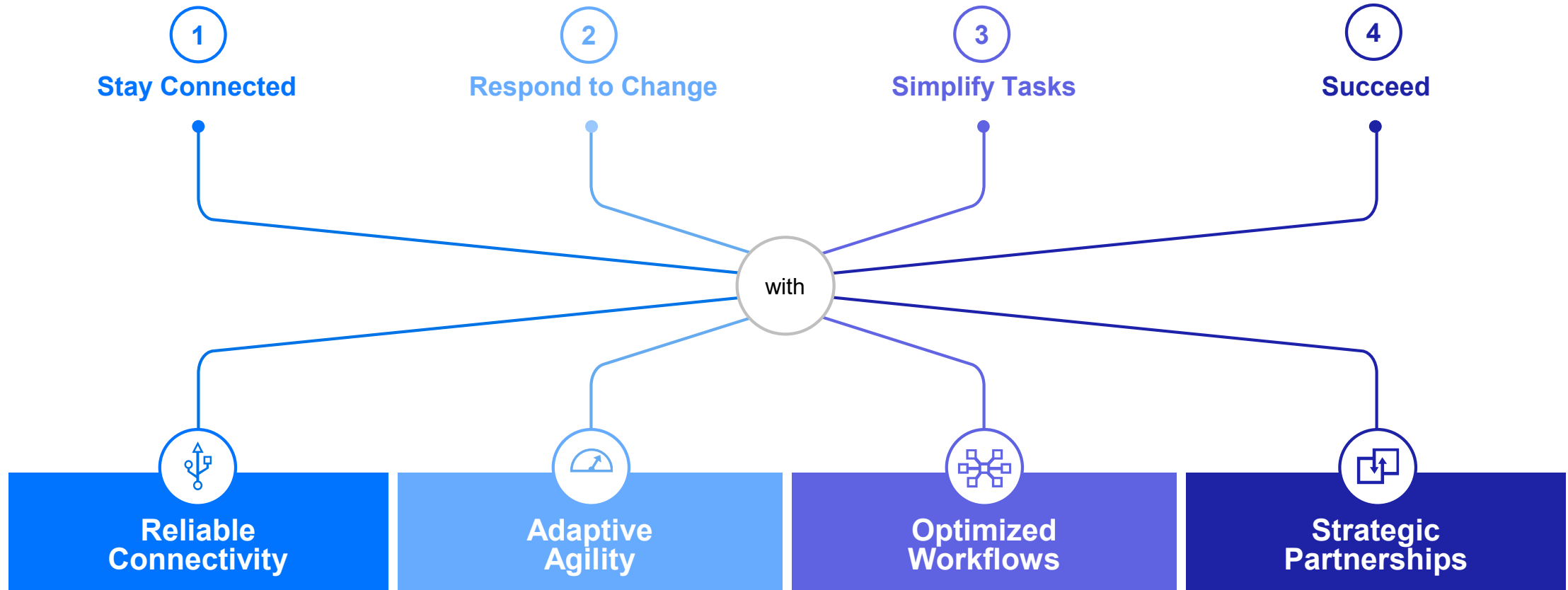
Simplify Operations and Be Ready for What's Next

With unique on-demand capabilities for your business needs



Technology with Key Benefits for All Users

To help you keep pace and operations flowing



Overcome Market Demands and Challenges

With field-ready innovation



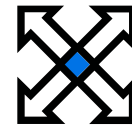
**Mobility DNA
Software Suite**



**Multi-layered
Security**



**Durable and
Rugged Solutions**



**Form Factor
Versatility**



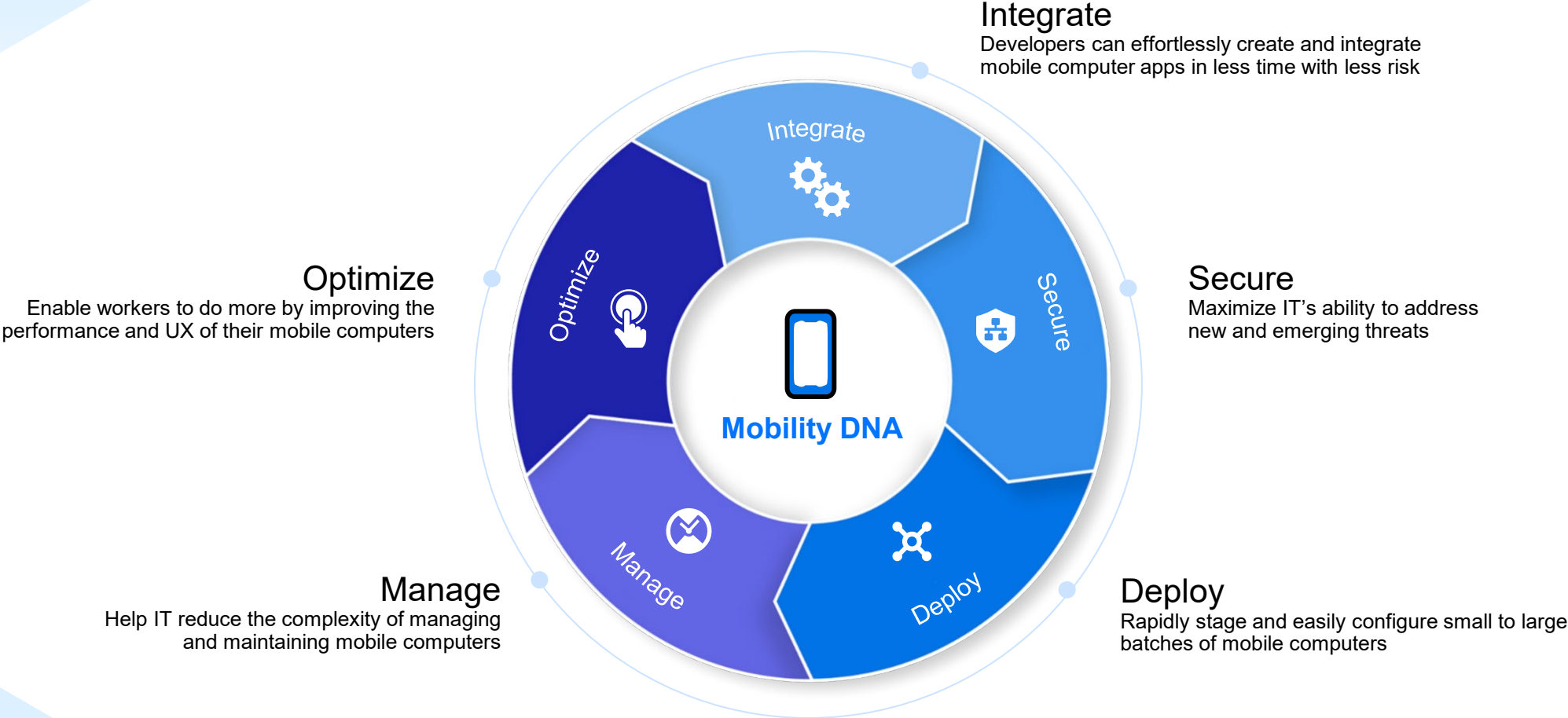
**Reliable
Connectivity**





Mobility DNA Software Suite

Intuitive app-based capabilities





Mobility DNA Software Suite

Your mobile device's built-in advantage

Integrate



Enterprise Mobility Management Tool Kit

Take full advantage of your device's capabilities

Enterprise Browser

Build feature-rich web applications

Zebra Mobility APIs

Integrate your mobile line of business application with Zebra software

- **DataWedge API**
Integrate data capture into enterprise apps without writing any code
- **Zebra Savanna API**
Connect to Zebra Data Services to build secure, scalable digital apps

Secure



Mobility Extensions (Mx)

Add extra layers of features and services crucial to protecting business data and network access

LifeGuard™ for Android™

Extend OS security support for 10 years

Enterprise Home Screen

Specify apps users can access, disable device features and automatically launch apps

GMS Restricted Mode

Turn off the Google Mobile Services you don't want

Deploy



StageNow

Stage thousands of devices with a scan of a barcode or a tap of an NFC tag

Zebra Zero-Touch

Let your devices provision themselves right out of the box with Zebra Zero-Touch

Manage



Device Diagnostic Tool

Test major systems to eliminate unnecessary repair-depot trips

Device Tracker

Easily track and find lost or missing Zebra mobile devices

Mobility DNA Wireless

Capture and analyze wireless data and voice to improve connectivity performance

RxLogger

Capture system and application logs to identify problems and avoid sending no-failure-found devices for repair

OEM Config

Software application providing a unified interface for all Zebra value-added APIs via the customer's EMM

LifeGuard™ - Analytics

See which security updates are available, which devices are eligible and more

Optimize



Device Central

Manage Bluetooth™ accessories

All-touch Terminal Emulation

Convert legacy, green screens into an all-touch, modern UX

Enterprise Keyboard

Enable fast, accurate alphanumeric entry

SimulScan

Effortlessly capture the right barcodes (up to 100 barcodes at the same time)

TekTerm

Migrate CE windows mobile applications to Android

Terminal Emulation Lite

Give users a modern touch interface with either automatic, predictive reformatting or a customized UX





Multi-layered Security

Defend your data with a trusted partner



Built-In Protection and Performance

Highly effective security protocols and features from the start



LifeGuard™

Extended security support and updates for 10 years



Automated Capabilities

Complete Wi-Fi® certifications automatically



Mobile Extension Security

Add enterprise feature sets for robust security and management



Visibility Services

Insights into the health and inventory of your devices



Globally Recognized Best Practices

Take comfort knowing Zebra follows best practices from world security experts





Durable and Rugged Solutions

Made for your way of working



Built for Any Environment

Withstand seared heat, rain, freezing cold and water intrusion



Far from Consumer Grade

Made for your way of working



Quality Design and Construction

For maximum productivity and ruggedness



Tested for Harsh Working Conditions

Lab testing, MIL standards and IP rating



Tailored to Your Workday

Tablets are rugged and purpose-built



Stay Connected

Powerful processing and connectivity everywhere + FirstNet





Form Factor Versatility

Built for every worker





Reliable Wireless Connectivity

For real-time, anytime collaboration



Wi-Fi 6/6E

More speed, more bandwidth and more capacity



5G

The fastest growing mobile technology in history



Citizens Band Radio Service (CBRS)

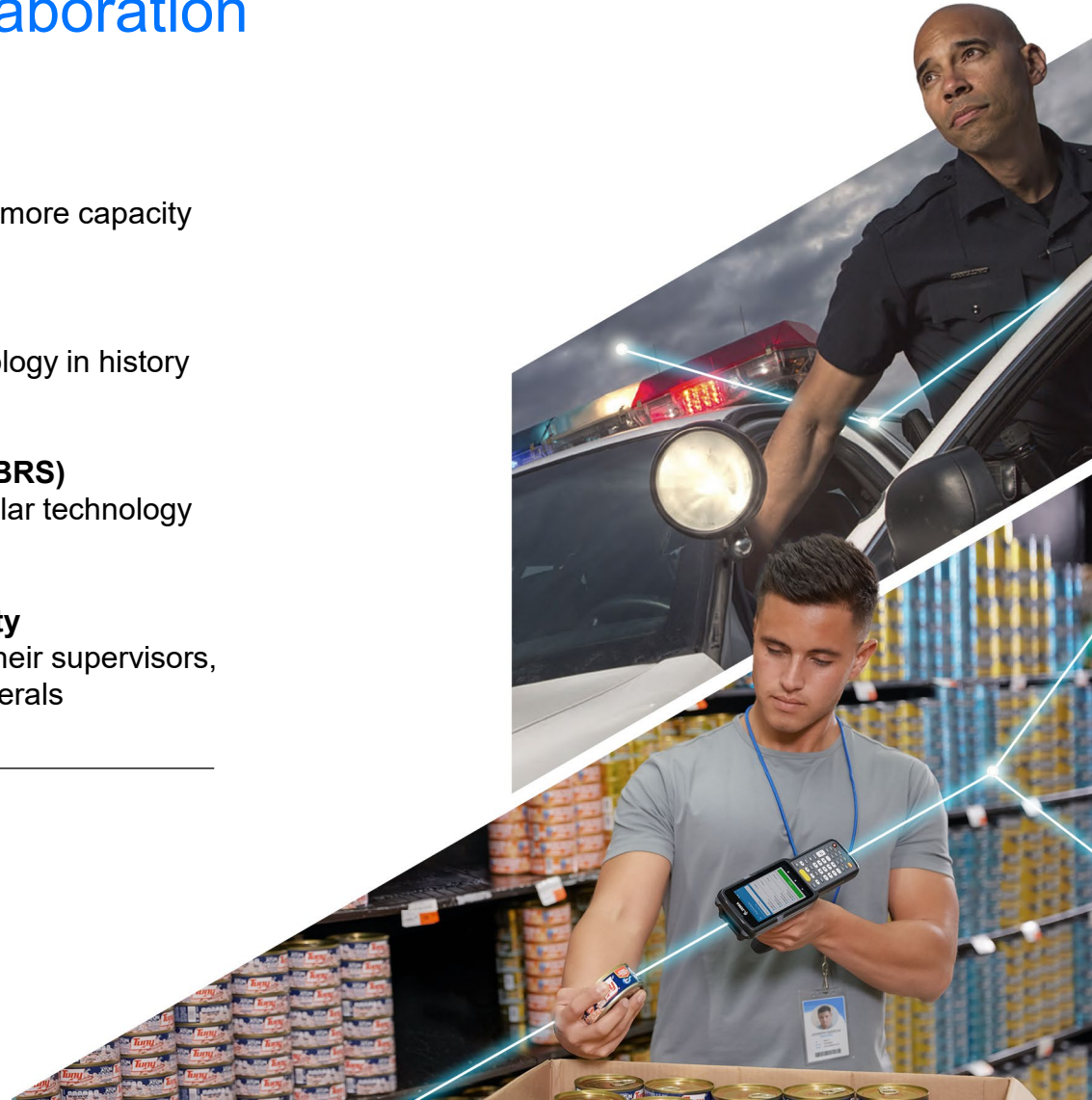
Marries the best of Wi-Fi and cellular technology



Bluetooth® Wireless Connectivity

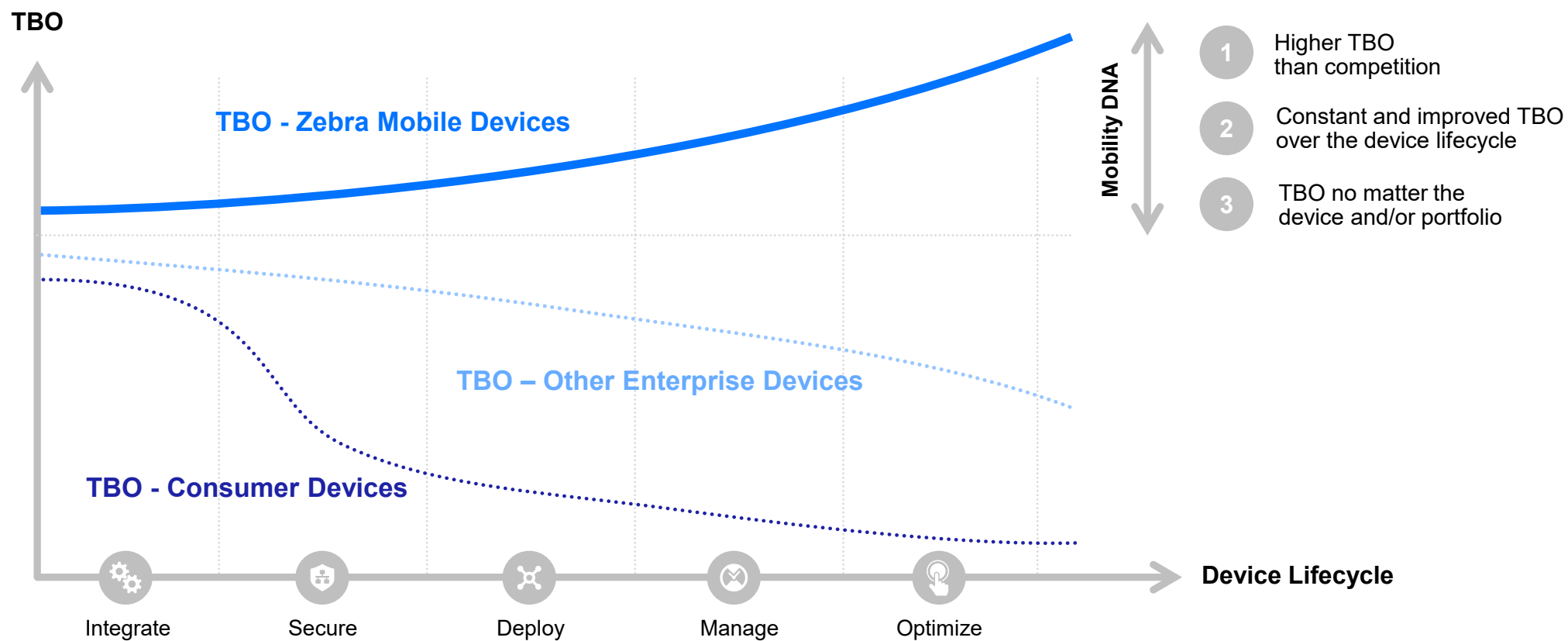
Keep your workers connected to their supervisors, co-workers, customers and peripherals

See the White Paper [here](#).



Lower Device Total Cost of Ownership

By raising total benefit of ownership



Zebra Mobile Computing Solutions for Multiple Verticals



Transportation and Logistics

Deliver non-stop service from first mile to the last



Manufacturing

Increase productivity from plant floor to the front door



Healthcare

Strengthen patient safety with accuracy from admissions to discharge



Retail and Hospitality

Give customers an experience that keeps them coming back



Government and Public Safety

Improve services and safety with intelligent mobility

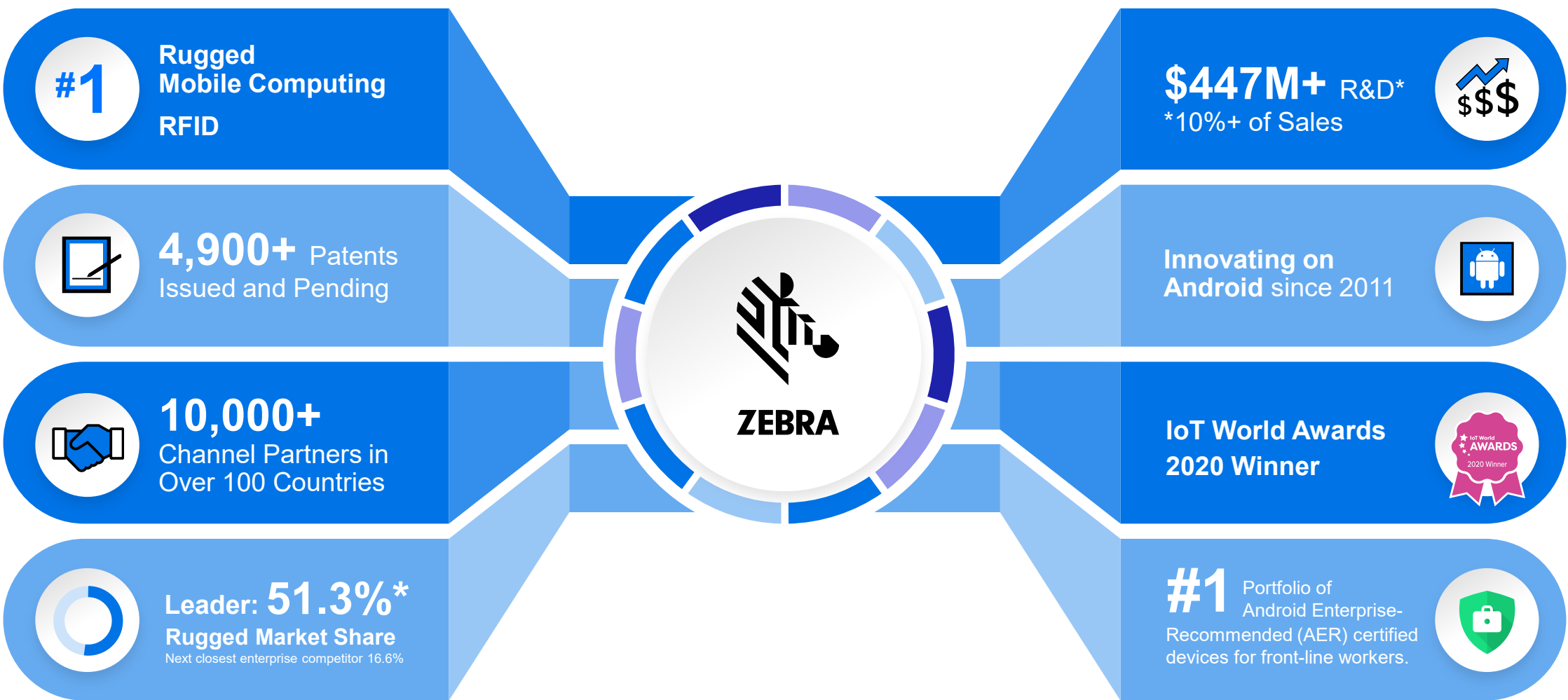


Simplify All Interactions for a Seamless Experience

By connecting your people, data, machines and devices



Customer-Centric Enterprise Market Leadership



Sources: VDC Research and Zebra analysis (f#1 market share), Gartner, Inc., "Magic Quadrant Indoor Location Services, Global," Tim Zimmerman, Annette Zimmermann, 13 January 2020 (Leader Status Status).
*IDC MarketScape: Worldwide Rugged Mobile Devices 2020 Vendor Assessment (doc #US46826320, September 2020)



Enable your On-Demand Enterprise with Zebra

